

SyncArchitect

SyncArchitect is the only tool specifically designed to help create resilient synchronization plans and diagnose distribution problems in your networks.

Introduction

Network Synchronisation is a fundamental cornerstone of any telecommunications network. The correlation between effective network synchronization and quality of service has long been established, yet the planning of synchronization distribution and provision is often overlooked.

The Situation

Effective network synchronization is a critical resource for any operator's network. We recognise that it is not the equipment itself that affects your network but more how this equipment is planned, provisioned and supported within the network. Careful and considered planning enables Network Operators to benefit from reducing capital and operational expense by optimising their synchronization networks.

The Solution

SyncArchitect offers a sync planning methodology to support Network Operators looking to optimise the design of their network. The methodology is based upon six simple directives created to ensure the maximum effectiveness of synchronization within a network:

- A Sync Plan should ensure that all network elements have a sync source traceable to G.811 during steady state network conditions
- A Sync Plan should identify the optimum investment in synchronization equipment
- As far as possible, a Sync Plan should ensure the distribution of suitable clocking signals to each and every piece of network equipment requiring synchronization during any single network failure condition
- A Sync Plan should be as simple as possible to understand, implement and maintain
- A Sync Plan should be comprehensively documented to suit the purposes of those who need to use it
- A Sync Plan should be regularly re-evaluated

The Challenge

Network Operators face a consistent set of challenges in maximising the effectiveness of synchronization within new and existing networks:

- The Quality of Service (QoS) of any network is directly related to the quality of network synchronization
- Cap Ex and Op Ex can be considerable, as investment in expensive synchronization equipment does not guarantee effective or consistent synchronization
- 95 percent of all synchronization functionality in a TDM network lies in the traffic elements
- Synchronization investment is wasted without careful planning and deployment

SyncArchitect is an off-line, desk-top software tool designed to enhance the effectiveness and productivity of the Synchronization Planner.

Sync Architect is a unique modelling tool that enables Network Operators to design and simulate both new and existing networks, allowing early identification of faults and providing for considerable long-term Cap Ex and Op Ex savings.

In addition to this we have access to and knowledge of the best available equipment to ensure that your network operates the highest standard possible throughout its lifecycle



SyncArchitect

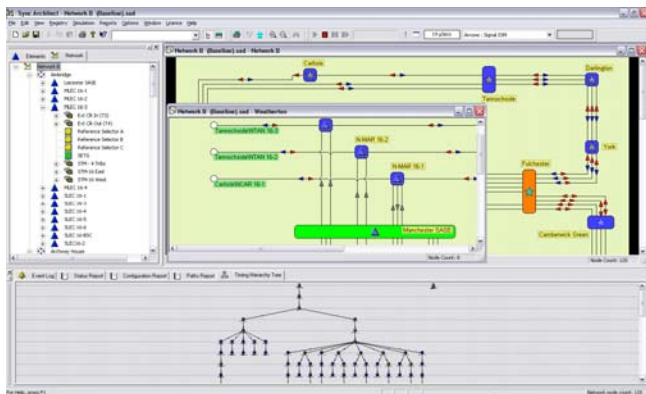
SyncArchitect is the only tool specifically designed to help create resilient synchronization plans and diagnose distribution problems in your networks.

The Sync Architect user environment

Sync Architect has been designed to complement the use of the Synchronization Planner and maximise the ultimate operational effectiveness of the network. This software is completely unique and should be seen as an essential tool to support all new or existing network configuration.

Standard Sync Architect Features

- Entire Sync Network documentation package
- Realistic network synchronisation simulation
- Multi-technology, multi-vendor support
- Intuitive multi-layered graphical user interface
- Graphical network documentation
- Exportable textual and graphical reports
- Provides secure electronic network models
- Enables use of ITU, ETSI, ANSI or the development of a unique rule base



Sync Architect Distiller

This plug-in is designed to support the use of Sync Architect within existing networks. It has been developed as a data mining tool that can interpret output data streams from any network management system and enable the construction of Sync Architect network models. The use of Sync Architect Distiller transforms Sync-Architect from a planning tool to a rapid network fault diagnosis tool.

Features of Sync Architect Distiller

The features of Sync Architect Distiller are considerable:

- It enables fast, realistic network simulation and identification of faults
- It provides for dynamic input data parsing rules as it can cope with different data formats
- Real network attributes are used, ensuring no documentation errors
- It supports fast Sync Architect network creation
- Synchronisation problem diagnosis is achieved in less time than it takes to make a single synchronization measurement
- It provides confidence in real network configuration
- Fast evaluation of possible recovery scenarios is achievable
- It supports multi-vendor, multi-technology networks

Benefits of Sync Architect

The benefits associated with Sync Architect are unparalleled within the current telecommunications market:

- The risk associated with the introduction of network change is comprehensively reduced
- It is possible to rapidly formulate resilient network designs, or diagnose faults in existing networks
- Multi-vendor, large networks are supported
- The software is easy to use and interpret
- Sync Architect supports both international standards and network operators' own policies
- It provides and enables network documentation library
- Network information can be easily exported into operators' own reports
- Simple, secure sharing of network documentation is enabled

SyncArchitect is deployed in network design offices throughout the world. Why not try the tool for yourself ?

Please contact Oscilloquartz or your local representative to receive a free evaluation copy.

Oscilloquartz SA reserves the right to change all specifications contained herein at any time without prior notice.

A COMPANY OF THE SWATCH GROUP