

OSA LM / LM Pro

Local Management solution for Oscilloquartz equipment

Introduction

The LM (Local Manager) software is a family of products designed to work with Oscilloquartz equipments. Although each LM software manages a specific equipment, they all provide the same user functionality through a consistent GUI (Graphical User Interface). The LM runs on any PC, connected to the equipment through a dedicated RS-232C interface, and allows direct control of the connected equipment.

Moreover, thanks to the *Universal Management Interface* (UMI), the OSA LM can also be used remotely via TCP/IP connection. For further details, please refer to our UMI data sheet.

The LM offers locally all management services that are expected from a TMN (Telecom Management Network) system: FCAPS (Fault, Configuration, Accounting, Performances and Security).

With these services, the user is able to graphically display the operational status and to configure/reconfigure the element. Troubleshooting is also made simpler thanks to powerful display features of the alarm status/history list.

LM Pro is a special version of the LM application for the OSA 5548B SASE providing, in addition to all other LM features performance measurement and display of all input signals.

Highlights

- User Friendly: Graphical presentation of all data
- Runs on MS-Windows
- Available for Oscilloquartz equipment
- Communication: Provides direct communication with the equipment using MML commands
- Supports all security actions expected from any management application
- Alarm list showing all alarms showing all details of alarms, such as type, severity, location, etc.

Management services

Fault Management handles the collection and processing of alarm messages, status data, events and other information from the equipment.

Configuration management provides control over all available functions of the equipment; operational status, configuration / reconfiguration, dialogue via MML commands.

Security Management

Each user is assigned a profile that lists all actions on a specific equipment, that he / she may perform according to his / her security level.

Alarm & Event Management

The Alarm List displays all active alarms for the equipment, using one text line per alarm. It displays well structured fields to identify the event's severity, date and time, event identification and other parameters.

All events can be stored locally in an Alarm Log.

The management board in the equipment operates with a circular event buffer containing the most recent 128 events.

When the operator opens the equipment connection view, all events and alarms will be reported in the event list, and reported graphically on the equipment view



OSA LM / LM Pro

Local Management solution for Oscilloquartz equipment

Supported equipment

OSA 5585 PRS, OSA 5581C GPS, OSA 5548B SASE, OSA 5533C SDU, OSA 5533B SDU, OSA 5530B SDU.

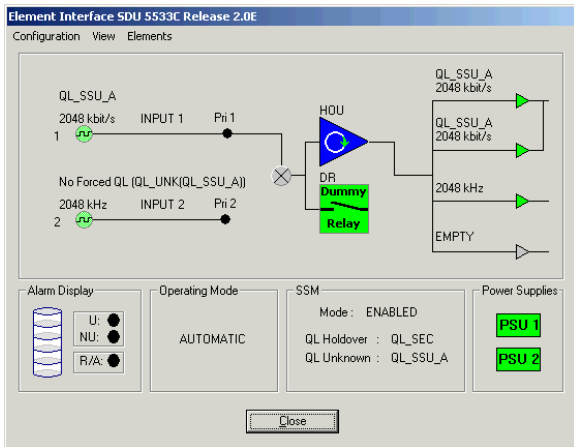


Figure 1: Equipment view/block diagram from the LM for OSA 5533C SDU application, showing the working mode of the equipment.

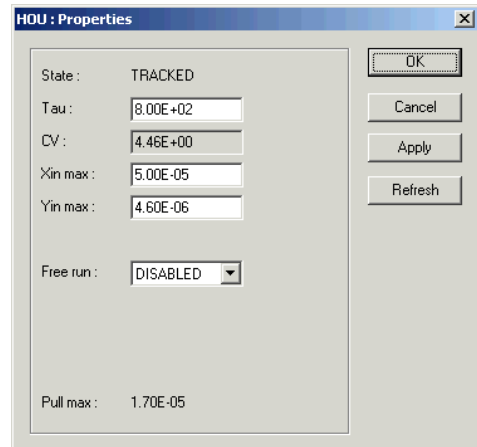


Figure 2: Configuration windows of the HOU from the LM for OSA 5533C SDU application.

Typical Characteristics

Performance Management (LM Pro only, requires ESU Unit):

- MTIE, TDEV, Ym data analysis
- Calculate performance values and evaluation graphs
- Display and/or print evaluation graphs against user selected templates.

Configuration Management:

- Common line interface using MML commands.
- Initial configuration.
- Real time element status.
- Reconfiguration and element control.

Required PC configuration (Minimum):

- Processor: ≥ Intel Pentium
- RAM: 64Mb
- Drives: HD (25Mb free space)
CD-ROM (4x or higher)
- Communication: One serial port
Serial communication cable (RS-232C)
- Operating System: Microsoft Windows 98/NT/2K/XP

Accessories:

- 1 × CD-ROM containing LM application, Operating and User Manuals
- 1 × Hardware Key (LM Pro only).

Security Management:

- User name and password Login
- Automatic Element Interface Login
- Configuration rights based on user profile

Fault & Event Management (LM Pro only):

- Alarm Reception (requires online connection)
- Alarm State Display (requires online connection)
- Alarm List Handling
- Alarm Storing

Operations Management:

- Alarm records list prints

Oscilloquartz SA reserves the right to change all specifications contained herein at any time without prior notice.