



# OCXO 8662 / 8663

# Excellent Thermal Behavior

## Oven Controlled Crystal Oscillator

The **8663** series offer excellent frequency stability in low volume, low profile package.

The thermal design with down to  $2 \times 10^{-10}$  pp stability over temperature range, makes this device unique for severe holdover requirements.

### Features

- SC cut 3<sup>rd</sup> overtone crystal resonator
- Wide operating temperature range (-20°C to 70°C)
- Sine or HC-MOS / TTL-compatible output
- Option Low phase noise / Low aging

### Benefits

- Selectable long term stability
- Easily interfaces with analog or digital circuits
- Fits all telecommunications requirements

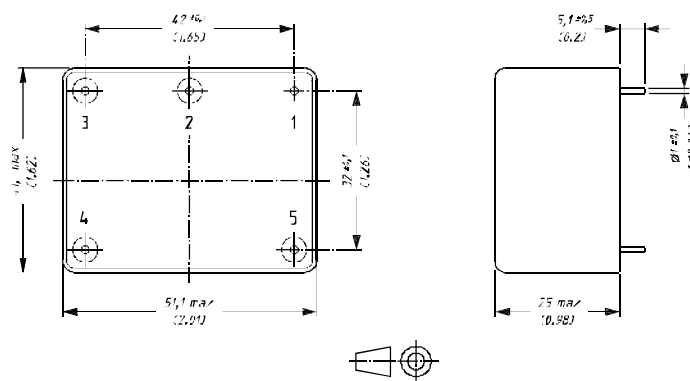
### Applications

- Precise time keeping and navigation equipment: **GPS/GSM/UMTS/CDMA**
- Stratum II & III
- Base station

Phase noise L (f) (BW = 1Hz)	
Frequency	10 MHz
Phase noise 1Hz	- 80 dBc
10 Hz	- 110 dBc
100 Hz	- 135 dBc
1k Hz	- 145 dBc
10k Hz	- 145 dBc
100k Hz	- 145 dBc

### Outline and Electrical connections

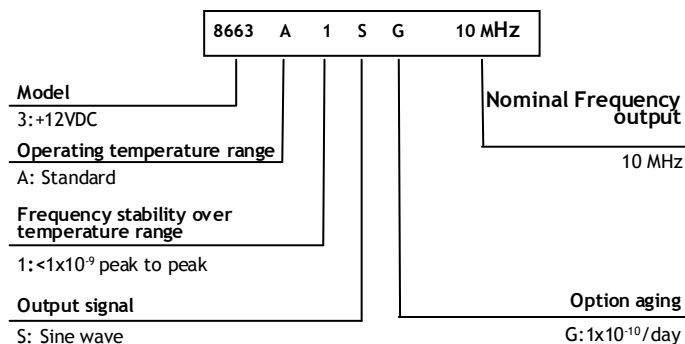
All dimensions in mm (inches)



### Pin-out connections

- 1: GND
- 2: Vc input
- 3: Vref out
- 4: +Power supply
- 5: Output

### Ordering Information



Frequency stability vs temperature range	Standard	Option 1	Option 6	Option 2
Frequency stability	$4 \times 10^{-9}$ peak to peak	$1 \times 10^{-9}$ peak to peak	$6 \times 10^{-10}$ peak to peak	$2 \times 10^{-10}$ peak to peak
Valid for temperature range	A / B / C	A / B / C	A / B / C	B / C

# Technical Specifications

# OCXO 8662 / 8663

## Oven Controlled Crystal Oscillator

Standard / Option	Standard	Option
Crystal Oscillator	SC-cut, 3rd overtone	
Standard frequencies	4.096/5/8.192/10/16.384 MHz	4.096 to 40.000 MHz
Operating temperature range	A: -20°C to +70°C	B: 0°C to +70°C C: 0°C to +60°C
Frequency stability ( $\Delta f/f$ )		
Long term stability Std & G:aging after 30 days of continuous operation **H : aging after 60 days of continuous operation ***J : aging after 90 days of continuous operation	2x10 <sup>-10</sup> /day 5x10 <sup>-9</sup> /month 3x10 <sup>-8</sup> /year	G : 1x10 <sup>-10</sup> /day **H : 5x10 <sup>-11</sup> /day ***J : 3x10 <sup>-11</sup> /day
Over temperature range	Std : < 4x10 <sup>-9</sup> peak to peak	1: : <1x10 <sup>-9</sup> peak to peak 2: : <2x10 <sup>-10</sup> peak to peak 6: : <6x10 <sup>-10</sup> peak to peak
Versus supply voltage changes (V <sub>CC</sub> ± 5%)	< 3x10 <sup>-10</sup>	
Versus load changes (50Ω ± 10%)	< 5x10 <sup>-11</sup>	
Short term stability $\sigma$ ( $\tau$ ) (0.2 to 10s) Allan variance	< 2x10 <sup>-11</sup>	
Electronic frequency control	>± 0,3 ppm (0 to +10 Volts) / Linearity < 5% / Positive slope	
Power Supply (P)		
Input voltage range (DC)	8662 : +24 Volts ± 5% 8663 : +12 Volts ± 5%	9V to 30V Consult factory
Power consumption	< 2.5W after warm-up at 25°C / < 8W during warm up	
Environment (Not operating)		
Storage temperature	-40°C to +125°C	
Vibration	MIL-STD 167-1	
Shock	50g, 11ms, 3 shocks in each direction of the main axis	
Size (L x W x H)	51.1 x 41.1 x 25 mm (2.01"x 1.62"x 0.98")	
Weight	100g	
Outline and electrical connections	See drawing	
Output Characteristics (Z)	S	T
Wave form	Sine	Square
Level (Tol.) / Impedance	> +4 dBm / 50Ω	HCMOS / TTL compatible
Phase noise	See table	Not applicable
Harmonics	< -25 dBc	Not applicable
Spurious in the frequency range up to 1MHz	< -70 dBc	Not applicable
Symmetry	Not applicable	40% - 60%
Rise / Fall time (10 / 90%, 12pF)	Not applicable	10 ns
Internal Reference voltage		
Pin 3 : Vref out (R <sub>load</sub> > 20 kΩ)	Std 7.8 Volt / on request 6.0 to 8.5 Volts (source resistance 1 kΩ)	

Oscilloquartz SA reserves the right to change all specifications contained herein at any time without prior notice.

[www.oscilloquartz.com](http://www.oscilloquartz.com)

Oscilloquartz SA / Rue des Brévardes 16 / CH-2002 Neuchâtel  
Switzerland / Tel.+41(0)32 722 55 55 / Fax+41(0)32 722 55 56  
[osa@oscilloquartz.com](mailto:osa@oscilloquartz.com) / [www.oscilloquartz.com](http://www.oscilloquartz.com)



**OSCILLOQUARTZ**  
SWATCH GROUP ELECTRONIC SYSTEMS

